



Wednesday, 22 July 2020

Dear all Wintringham Residents

**Re: COVID-19 Update – Mask wearing compulsory for Melbourne and Mitchell Shire**

**Head Office**

136 Mt Alexander Road  
PO Box 193  
Flemington Victoria 3031

T 03 9376 1122  
F 03 9376 8138  
E [admin@wintringham.org.au](mailto:admin@wintringham.org.au)  
[www.wintringham.org.au](http://www.wintringham.org.au)

ABN 97 007 293 478

I hope this letter finds you well in these challenging times. I'd like to reassure you that we remain focussed on continuing to provide you with the support you need to get through this COVID-19 pandemic.

As you may have heard last weekend, the Victorian Chief Health Officer (CHO) announced that from 11.59pm on Wednesday 22<sup>nd</sup> July, all people living in Melbourne and Mitchell Shire are **required to wear a mask when leaving home for one of the four permitted reasons**. Those four reasons are; shopping for food supplies, work and study, exercise and outdoor recreation, care and caregiving.

People who are aged under 12, or those who have a relevant medical conditions i.e. respiratory difficulties, mental health are exempt from wearing masks.

For areas outside of Melbourne and Mitchell Shire, people are recommended to wear a face mask when outside their home if it is difficult to keep 1.5 metres apart from other people.

*"The main value of wearing masks is to protect other people, if the person wearing the mask is unknowingly infected, wearing the mask will reduce the chance of them passing the virus onto others," Australian Government.*

Please contact your case manager or support worker if you have any questions, need help purchasing a mask or getting food, medication and essential supplies.

Thank you for your co-operation and continued support.



Yours sincerely

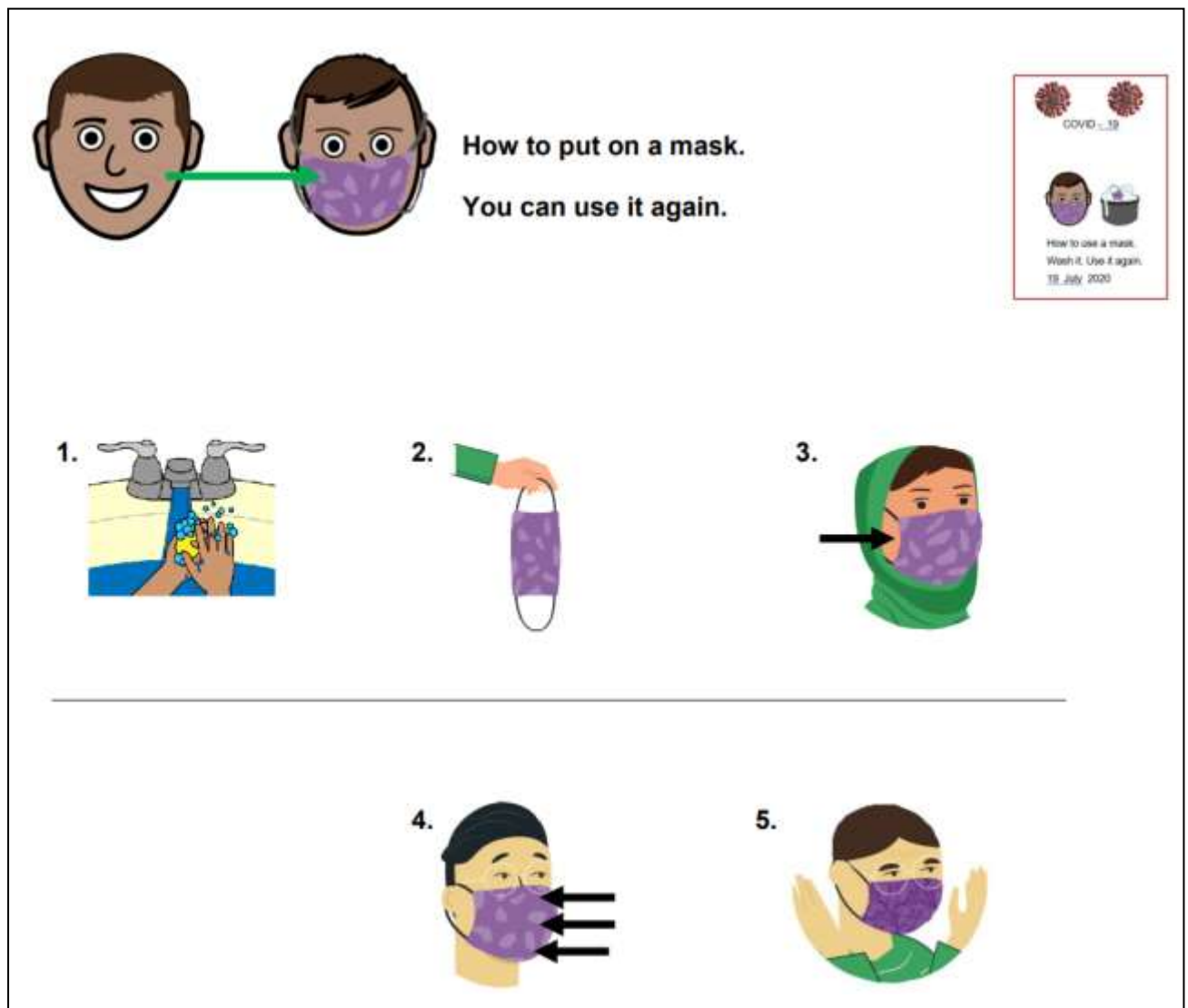


Bryan Lipmann AM  
CEO/Founder

### Other useful information:

#### Re-useable masks

How to put on:



## How to remove:



For a list of other face mask-related questions and answers see the Victorian Department of Health and Human Services website:

[www.dhhs.vic.gov.au/face-masks-victoria-covid-19](http://www.dhhs.vic.gov.au/face-masks-victoria-covid-19)

## Surgical / single use masks

### How to put on and remove

#### HOW TO WEAR SURGICAL MASK

- 

1 Clean your hands with soap and water or hand sanitizer
- 

2 Hold the mask by the ear loops and place a loop around each ear
- 

3 Mold or pinch the stiff edge to the shape of your nose
- 

4 Pull the bottom of the mask over your mouth and chin
- 

5 Avoid touching the front of the mask when wearing

#### HOW TO REMOVE SURGICAL MASK

- 

1 Clean your hands with soap and water or hand sanitizer
- 

2 Avoid touching the front of the mask. Only touch the ear loops
- 

3 Hold both of the ear loops and gently lift and remove the mask
- 

4 Throw the mask in the trash
- 

5 Clean your hands with soap and water or hand sanitizer